

CAPRARI PARTS BOOK

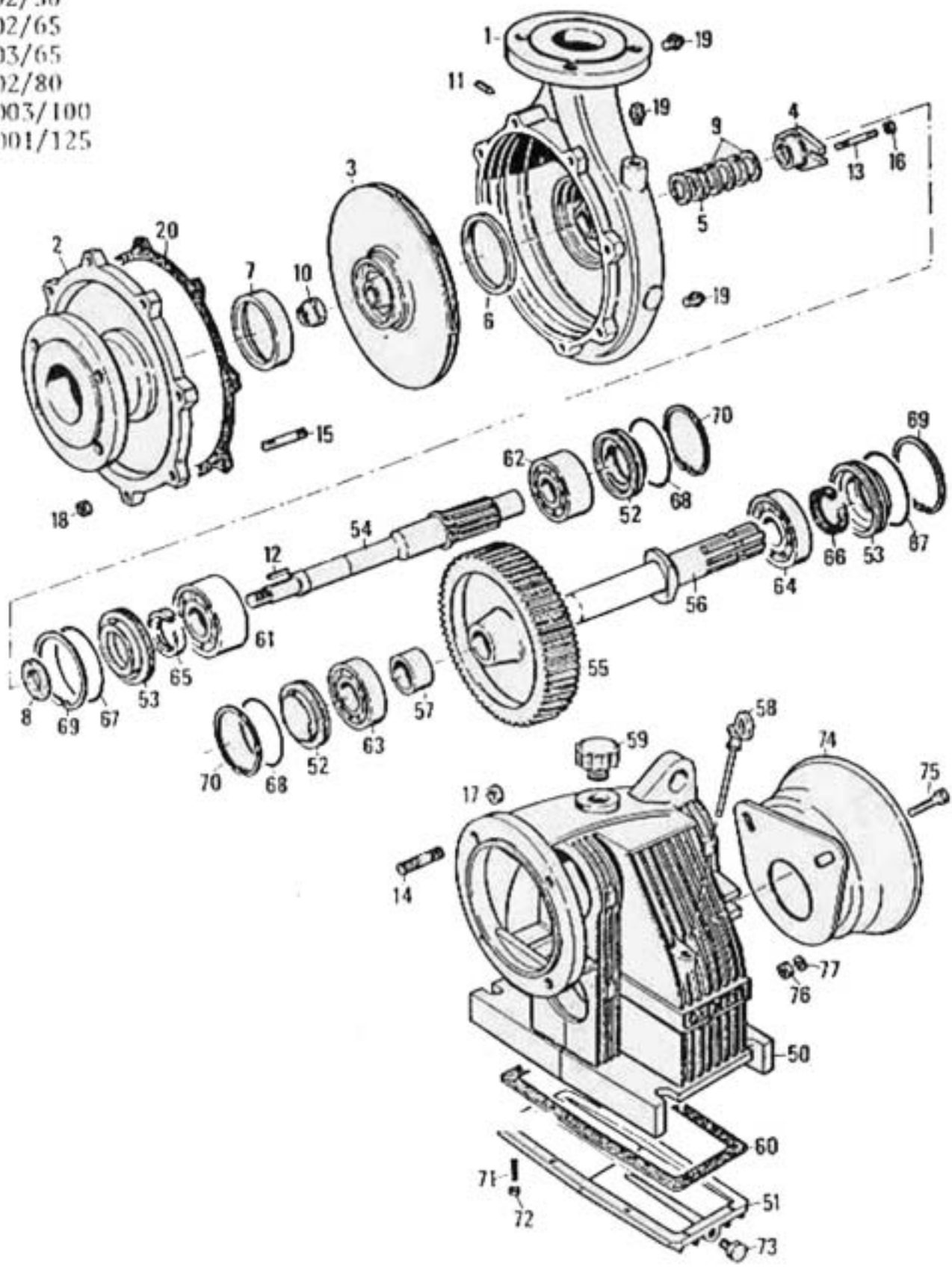


"When Mother Nature Wont Deliver,
Tuckasee Will"



TUCKASEE IRRIGATION INC
PO BOX 837 300 DAV RD
RUSSELLVILLE KY 42276
PHONE: 800-725-5986
FAX: 270-726-9528
www.tuckaseeirrigation.com

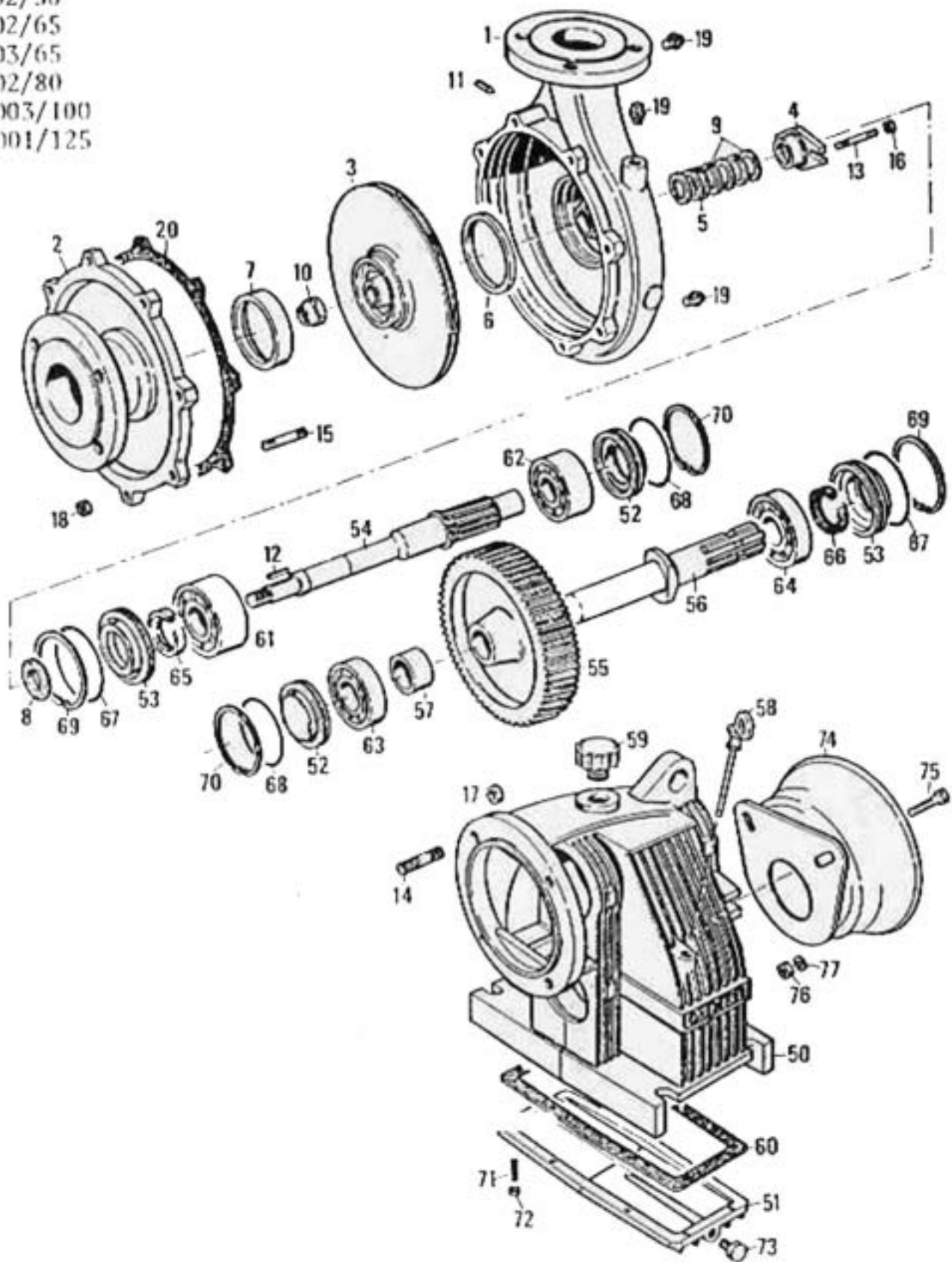
D2/50
D2/65
D3/65
D2/80
D03/100
D01/125



CAPRARI PUMP ASSEMBLY D240

No.	Description	Kifco #	Qty.	Tuckasee #	Dimensions
1g	Pump Casing	040-4007-3			
2h	Suction Cover	040-4038-4			
3h	Impeller	040-4080-1			
4a	Stuffing Box	040-4163-1			
5a	Lantern Ring	040-3315-2			
6f	Wear Ring	040-4453-2			
7f	Wear Ring	040-4453-3			
8a	Deflector	040-3183-4	1		
9a	Packing	040-3334-3	1		
10a	Impeller Nut	040-3313-1	1		
11	Dowel	040-3074-5	2		
12a	Impeller Key	040-3142-1	1		
13a	Stud	040-3032-0	2		8-1.25MM X 53MM
14a	Stud	040-3034-1	4		12- 1.75MM X 37MM
15a	Stud	040-3034-1	8		12- 1.75MM X 37MM
16a	Nut	040-3101-7	2		8-1.25MM
17a	Nut	040-3102-5	4		12-1.75MM
18a	Nut	040-3102-5	8		12-1.75MM
19	Plug	040-3171-4	3		3/8"
20a	Gasket	040-3373-4	1		
50a	Gear Casing	040-4250-9	1		
51a	Gearbox Cover	040-4253-9	1		
52a	Cap, Gearbox	040-4371-9	2		
53a	Seal, Housing	040-4372-0	2		
54a	Impeller Shaft	040-4272-8	1		540 RPM
55a	Gear Wheel	040-4256-2	1		540 RPM
56a	Input Shaft	040-4278-3	1		
57a	Spacer	040-4175-8	1		
58a	Dip Stick	040-3182-0	1		
59	Filler Cap	040-3174-3	1	PPC 9	
60a	Gasket	040-3383-4	1		
61a	Bearing, Input Shaft	040-3511-1	1		
62a	Bearing, Input Shaft	040-3511-0	1		
63a	Bearing, Input Shaft	040-3502-1	1		
64a	Bearing, Input Shaft	040-3501-6	1		
65a	Oil Seal	040-3324-5	1		
66a	Oil Seal	040-3325-4	1		
67	O-Ring	040-3342-3	2		
68a	O-Ring	040-3342-1	2		
69a	Retaining Ring	040-3156-8	2		
70a	Retaining Ring	040-3156-6	2		
71	Stud	040-3031-0	8		6-1.0MM X20MM
72	Nut	040-3101-2	8		6MM
73	Plug	040-3172-2	1		1/4"
74	Guard-PTO Shaft	040-4630-1	1		
75a	Bolt	040-3008-2	2		10MM x 35MM
76	Nut	040-3102-2	2		10MM
77	Washer	040-3131-6	2		
78a	Sleeve	040-4186-4	1		

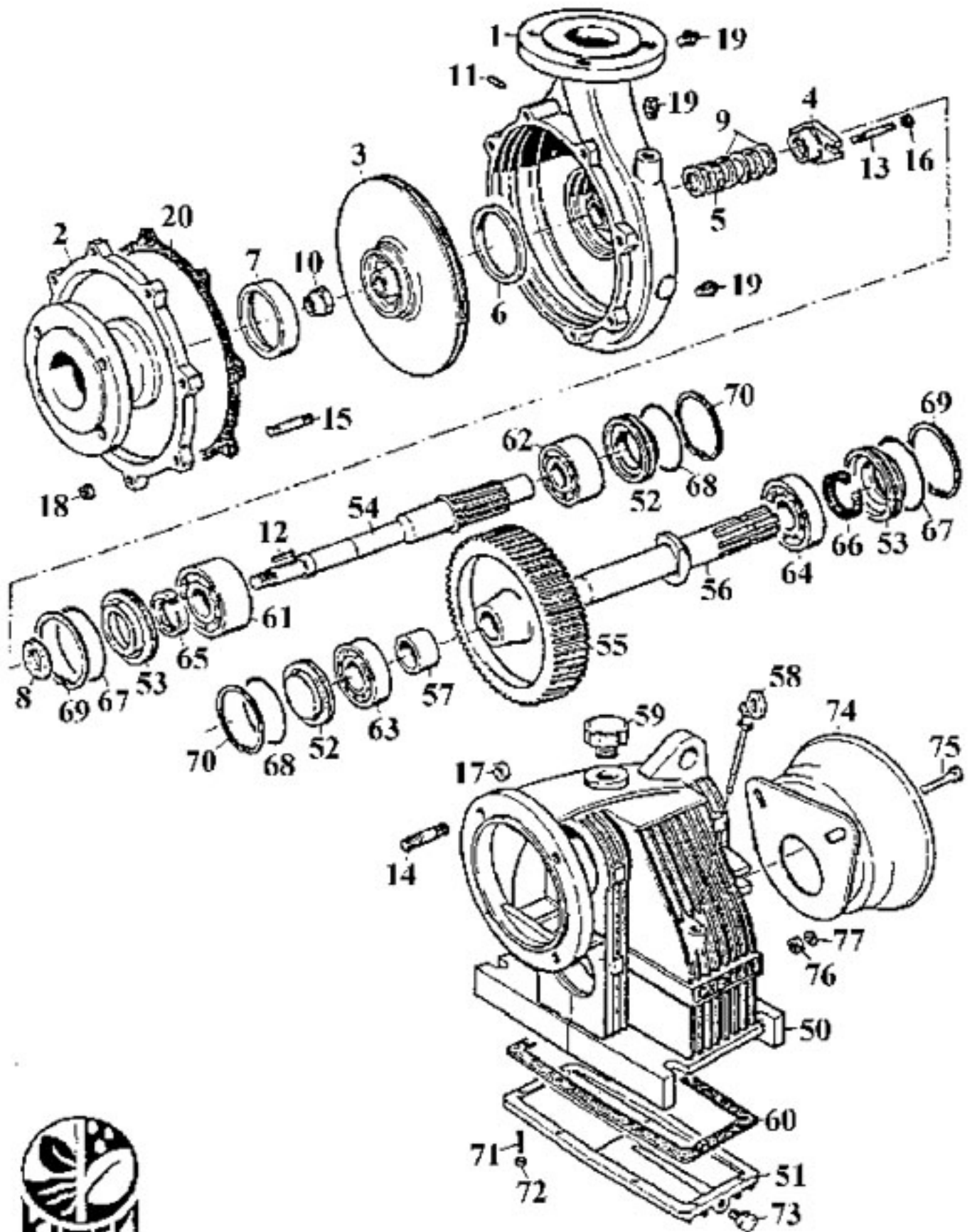
D2/50
D2/65
D3/65
D2/80
D03/100
D01/125



CAPRARI PUMP ASSEMBLY D250

No.	Description	Kifco #	Qty.	Tuckasee #	Dimensions
1A	Pump Casing	040-4007-6	1		
2A	Suction Cover	040-4038-7	1		
3A	Impeller	040-4080-4	1		
4A	Stuffing Box	040-4163-1	1		
5A	Lantern Ring	040-3315-2	1		
6A	Wear Ring	040-4453-4	1		
7A	Wear Ring	040-4453-5	1		
8A	Deflector	040-3183-4	1		
9A	Packing	040-3334-3	1		
10A	Impeller Nut	040-3313-1	1		
11	Dowel	040-3074-5	2		
12A	Impeller Key	040-3142-1	1		
13A	Stud	040-3032-0	2		8-1.25MM X 53MM
14A	Stud	040-3034-1	4		12-1.75MM X 37MM
15A	Stud	040-3034-1	8		12-1.75MM X 37MM
16A	Nut	040-3101-7	2		8-1.25MM
17A	Nut	040-3102-5	4		12-1.75MM
18A	Nut	040-3102-5	8		12MM
19	Plug	040-3171-4	3		3/8"
20A	Gasket	040-3373-4	1		
50A	Gear Casing	040-4250-9	1		
51A	Gearbox Cover	040-4253-9	1		
52A	Cap, Gearbox	040-4371-9	2		
53A	Seal, Housing	040-4372-0	2		
54A	Impeller Shaft	040-4272-8	1		540 RPM
55A	Gear Wheel	040-4256-2	1		540 RPM
56A	Input Shaft	040-4278-3	1		
57A	Spacer	040-4175-8	1		
58A	Dip Stick	040-3182-0	1	PPC 8	
59	Filler Cap	040-3174-3	1	PPC 9	
60A	Gasket	040-3383-4	1		
61A	Bearing, Input Shaft	040-3511-1	1		
62A	Bearing, Input Shaft	040-3511-0	1		
63A	Bearing, Input Shaft	040-3502-1	1		
64A	Bearing, Input Shaft	040-3501-6	1		
65A	Oil Seal	040-3324-5	1		
66A	Oil Seal	040-3325-4	1		
67	O-Ring	040-3342-3	2		
68A	O-Ring	040-3342-1	2		
69A	Retaining Ring	040-3156-8	2		
70A	Retaining Ring	040-3156-6	2		
71	Stud	040-3031-0	8		6-1.0 MM X 20MM
72	Nut	040-3101-2	8		6MM
73	Plug	040-3172-2	1		1/4"
74	Guard-PTO Shaft	040-4630-1	1		
75A	Bolt	040-3008-2	2		10MM X 35MM
76	Nut	040-3102-2	2		10MM
77	Washer	040-3131-6	2		
78A	Sleeve	040-4186-4	1		

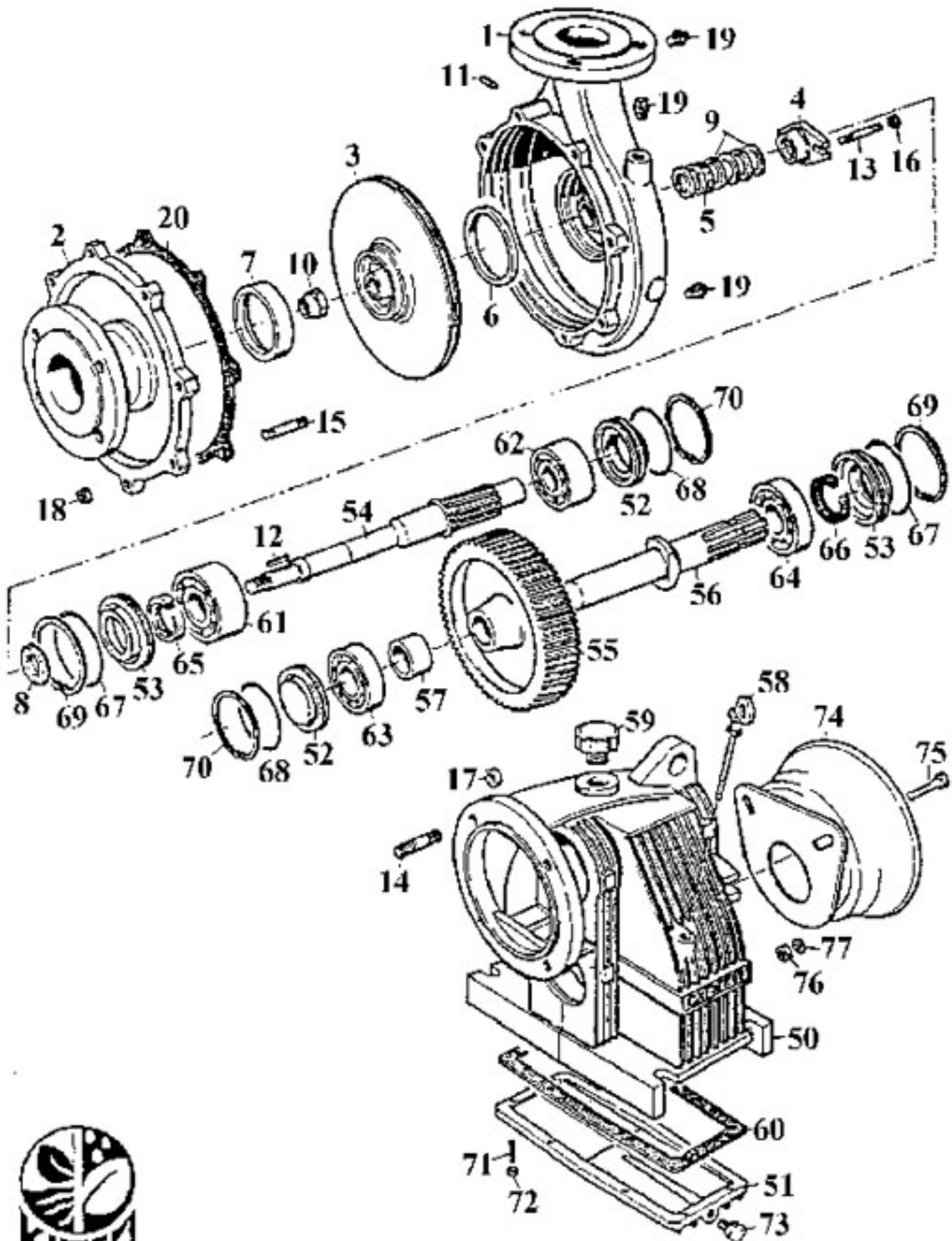
caprai



CAPRARI PUMP ASSEMBLY D350

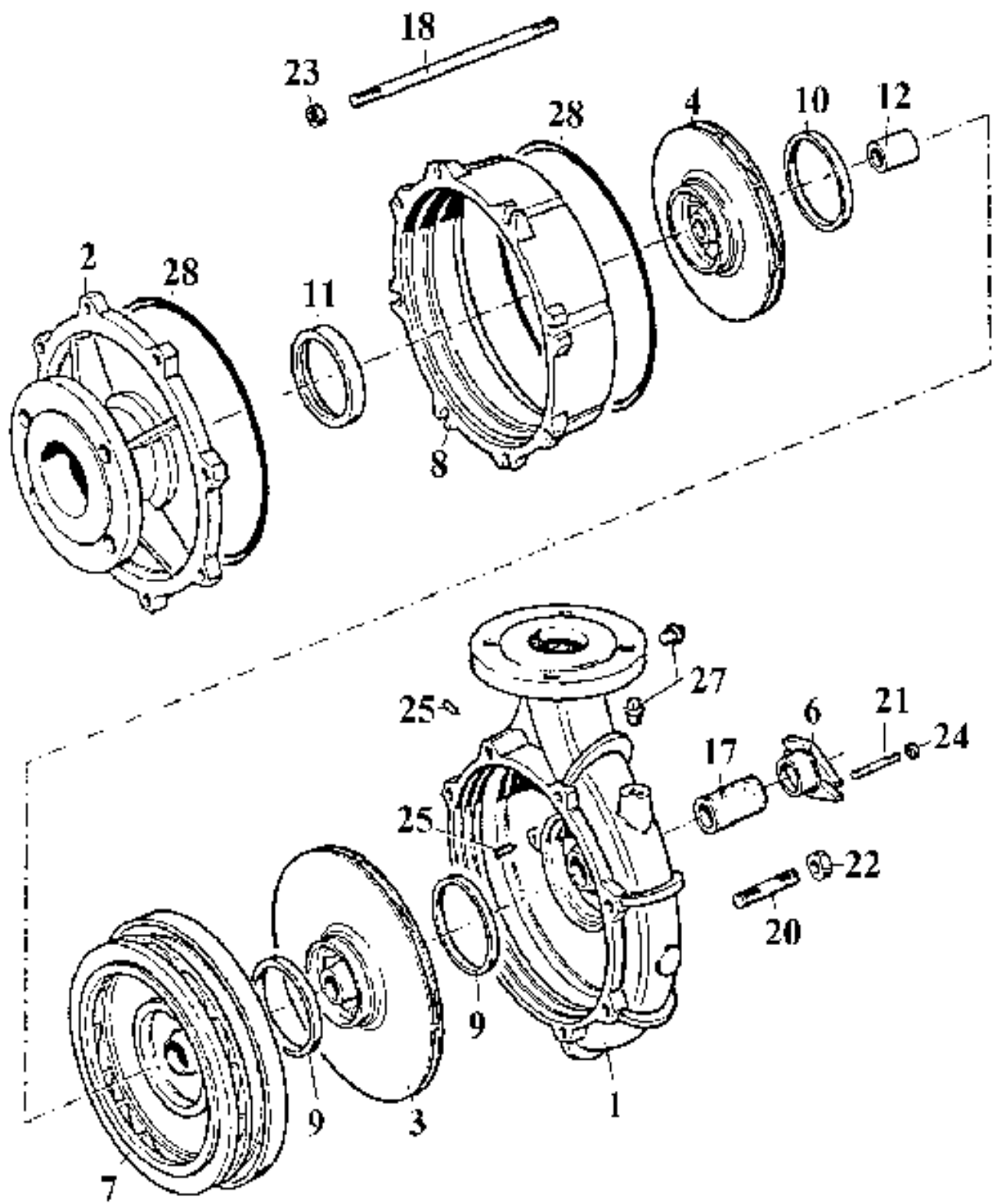
No.	Description	Kifco #	Qty.	Tuckasee #	Dimensions
1b	Pump Casing	040-4007-7	1		
2b	Suction Cover	040-4038-8	1		
3b	Impeller	040-4080-5	1		
4b	Stuffing Box	040-4163-2	1		
5b	Lantern Ring	040-3315-3	1		
6a	Wear Ring	040-4453-4	1		
7a	Wear Ring	040-4453-5	1		
8b	Deflector	040-3183-5	1		
9b	Packing	040-3334-4	1	PPC15	
10b	Impeller Nut	040-3313-2	1	PPC 2	18MM (RPDA 18B)
11	Dowel	040-3074-5	2		
12b	Impeller Key	040-3142-7	1	PPC 3	6MM X 6MM X 30MM
13b	Stud	040-3033-2	2		8 MM X 45MM
14b	Stud	040-3036-1	4		14-2.0 X 44MM
16b	Nut	040-3102-1	2		10MM
17b	Nut	040-3102-8	4		14-2.0MM
18a	Nut	040-3102-5	8		12MM
19	Plug	040-3171-4	3		3/8"
20b	Gasket,	040-3372-2	1	PPC 22	
50b	Gear Casing	040-4251-0	1		
51b	Grbx Cvr	040-4254-0	1		
52b	Cap,Grbx,	040-4372-1	2	PPC 17A	
53b	Seal, Housing	040-4372-2	2	PPC 17	O-RING 73.03 X 3.53
54b	Impeller Shaft	040-4268-2	1	PPC 5	6.28-1 14t
55b	Gear Wheel	040-4256-9	1	PPC 6	88t
56b	Input Shaft	040-4278-4	1	PPC 7	
57b	Spacer	040-4175-4	1		
58b	Dip Stick	040-3181-9	1	PPC 8	
59	Filler Cap	040-3174-3	1	PPC 9	
60b	Gasket	040-3383-5	1	PPC 23	
61b	Bearing, Input Shaft	040-3511-3	1	PPC 10	5307/A
62b	Bearing, Input Shaft	040-3511-2	1	PPC 13	5306/A
63b	Bearing,	040-3502-3	1	PPC 12	207/ WDG
64b	Bearing, Input Shaft	040-3504-5	1	PPC 11	5306/A
65b	Oil Seal	040-3325-5	1	PPC 19	35210
66b	Oil Seal	040-3325-9	1	PPC 19	35210
67b	O-Ring,	040-3342-8	2		
68b	O-Ring,	040-3342-6	2		
69b	Retaining Ring,	040-3157-4	2	PPC 20	80MM
70b	Rtnng Rng,	040-3157-2	2	PPC 21	72MM
71	Stud	040-3031-0	8		6-1.0MM X 20MM
72	Nut	040-3101-2	8		6MM
73	Plug	040-3172-2	1		1/4"
74	Guard-PTO Shaft	040-4630-1	1		
75b	Bolt	040-3008-4	2		10MM X 40MM
76	Nut	040-3102-2	2		10MM
77	Washer	040-3131-6	2		
78b	Sleeve,	040-4186-1	1		

caprati



CAPRARI PUMP ASSEMBLY D365

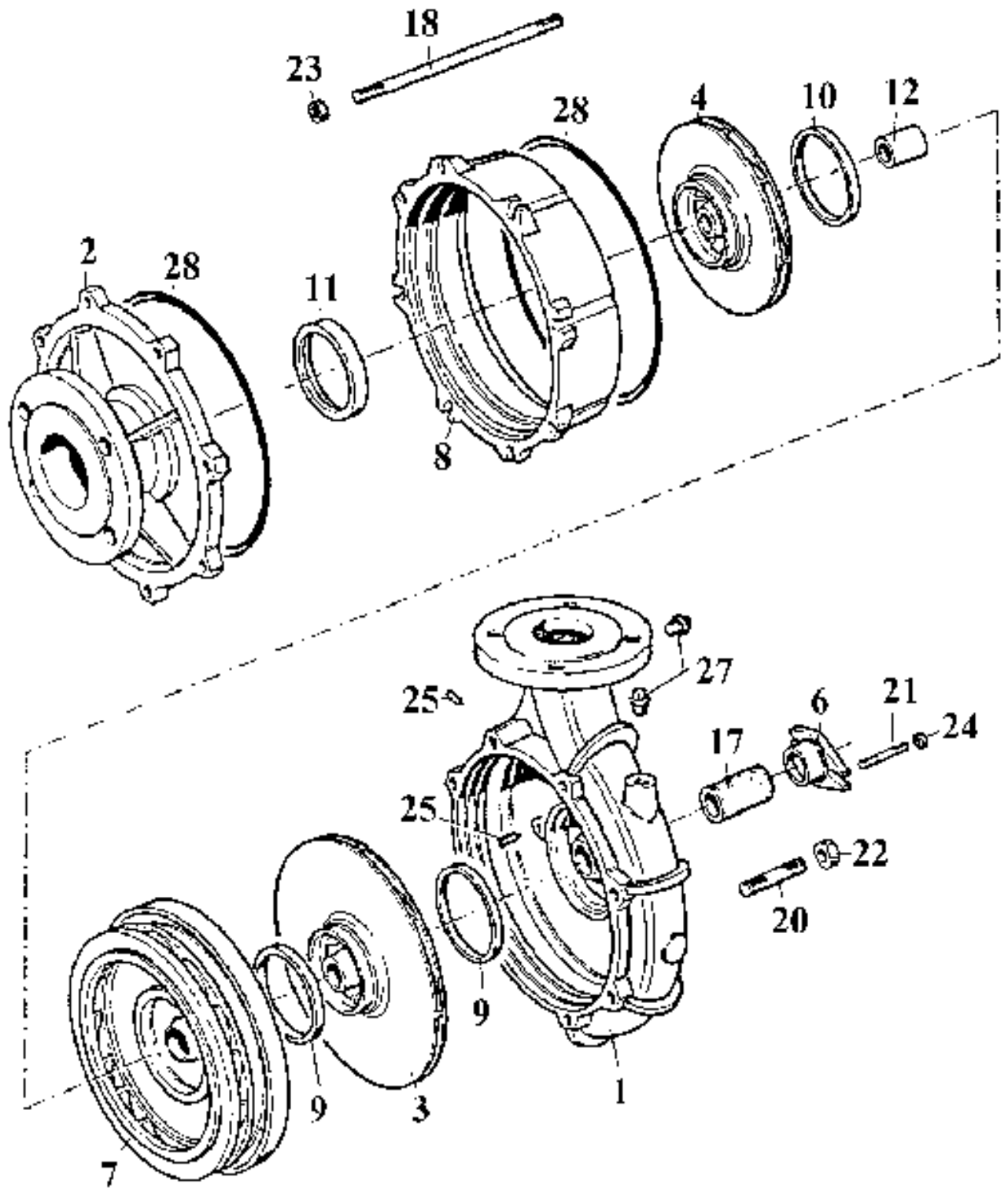
No.	Description	Kifco #	Qty.	Tuckasee #	Dimensions
1D	Pump Casing	040-4008-0	1	PPC18	
2D	Suction Cover	040-4039-1	1		
3D	Impeller	040-4690-0	1	PPC4	
4B	Stuffing Box	040-4163-2	1		
5B	Lantern Ring	040-3315-3	1		
6B	Wear Ring	040-4453-6	1		
7B	Wear Ring	040-4453-7	1	PPC14	
8B	Deflector	040-3183-5	1		
9B	Packing	040-3334-4	1	PPC15	
10B	Impeller Nut	040-3313-2	1	PPC2	18MM(RPDA18B)
11	Dowel	040-3074-5	2		
12B	Impeller Key	040-3142-7	1	PPC3	6MM X 6MM X 30 MM
13B	Stud	040-3033-2	2		8 MM X 45 MM
14B	Stud	040-3036-1	4		14 -2.0 X44 MM
15A	Stud	040-3034-1	8		12-1.75 X37MM
16B	Nut	040-3102-1	2		10MM
17B	Nut	040-3102-8	4		14-2.0MM
18A	Nut	040-3102-5	8		12MM
19	Plug	040-3171-4	3		3/8"
20B	Gasket	040-3372-2	1	PPC22	
50B	Gear Casing	040-4251-0	1		
51B	Grbx Cvr	040-4254-0	1		
52B	Cap,Grbx	040-4372-1	2	PPC17A	
53B	Seal, Housing	040-4372-2	2	PPC17	Seal-73.03X3.53
54B	Impeller Shaft	040-4268-2	1	PPC5	6.28-1 14t
55B	Gear Wheel	040-4256-9	1	PPC6	88t
56B	Input Shaft	040-4278-4	1	PPC7	
57B	Spacer	040-4175-4	1		
58B	Dip Stick	040-3181-9	1	PPC8	
59	Filler Cap	040-3174-3	1	PPC9	
60B	Gasket	040-3383-5	1	PPC23	
61B	Bearing, Impeller Shaft, Rear Upper	040-3511-3	1	PPC10	5307/A
62B	Bearing, Impeller Shaft, Front Upper	040-3511-2	1	PPC13	5306/W
63B	Bearing, Input Shaft Rear Lower	040-3502-3	1	PPC12	207/WDG
64B	Bearing, Input Shaft, Front Lower	040-3504-5	1	PPC11	5306/A
65B	Oil Seal	040-3325-5	1	PPC19	355210
66B	Oil Seal	040-3325-9	1	PPC19	355210
67B	O-Ring	040-3342-8	2		
68B	O-Ring	040-3342-6	2		
69B	Retaining Ring	040-3157-4	2	PPC20	80MM
70B	Rtngng Rng	040-3157-2	2	PPC21	72MM
71	Stud	040-3031-0	8		6-1.0MM x 20MM
72	Nut	040-3101-2	8		6MM
73	Plug	040-3172-2	1		1/4"
74	Guard-PTO Shaft	040-4630-1	1		
75B	Bolt	040-3008-4	2		10MM X 40MM
76	Nut	040-3102-2	2		10MM
77	Washer	040-3131-6	2		
78B	Sleeve	040-4186-1	1		



CAPRARI PUMP ASSEMBLY DMR80

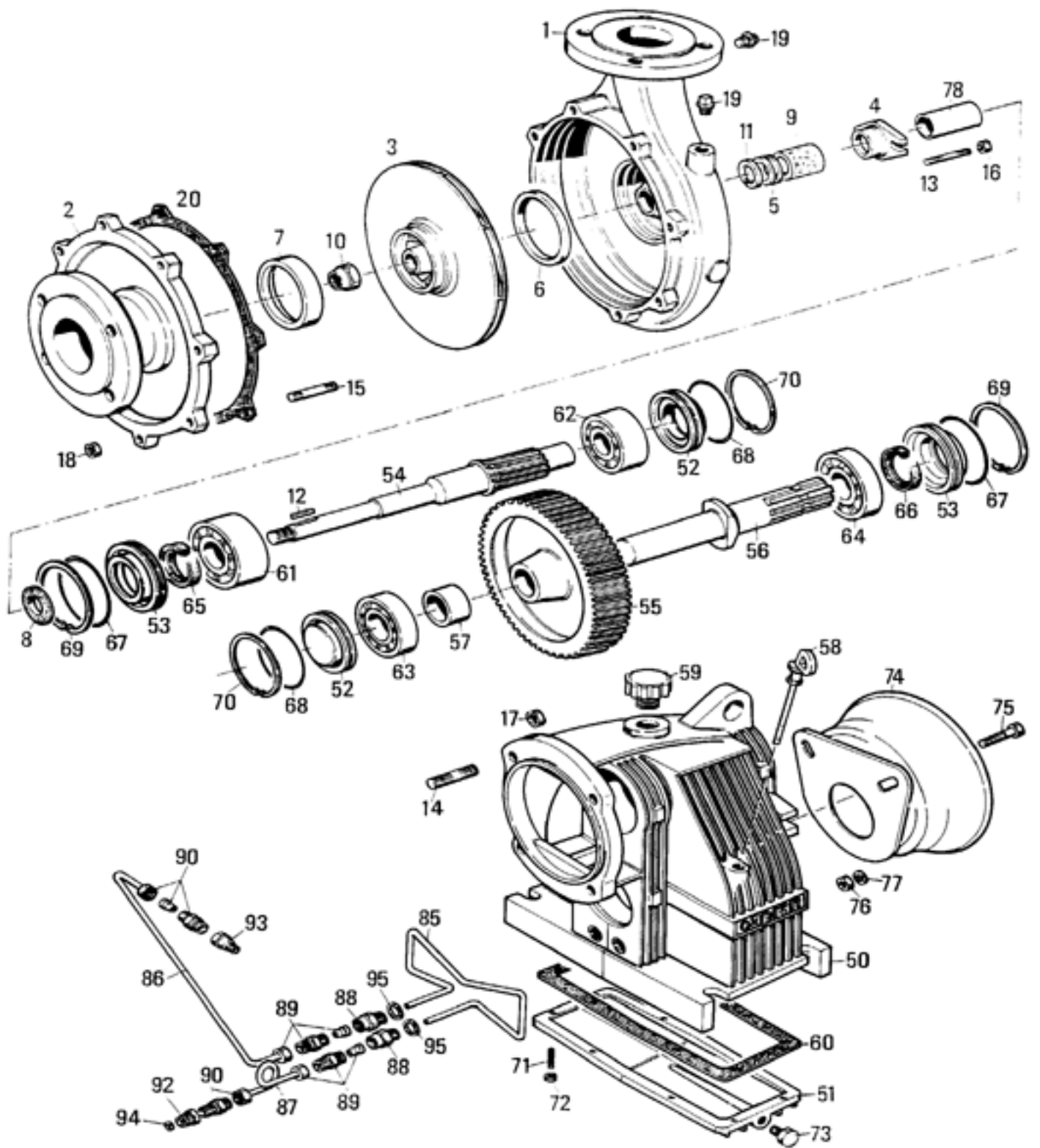
No.	Description	Kifco #	Qty.	Tuckasee #	Dimensions
1	Pump Casing	040-4008-3	1		
2	Suction Cover	040-4039-4	1		
3A	Impeller 2nd Stg	040-4693-1	1		
4	Impeller Diffuser	040-4081-0	1		
6	Stuffing Box	040-4163-3	1		
7	Diffuser	040-4337-8	1		
8	Stage Casing	040-4339-0	1		
9	Wear Ring	040-4453-8	2		
10	Wear Ring	040-4453-8	1		
11	Wear Ring	040-4453-9	1		
12	Spacer Sleeve	040-4171-1	1		
17	Packing	040-3334-5	1		
18	Stud, (Pump Casing)	040-3054-7	8		
20	Stud, (Pump Casing)	040-3036-7	8		
21	Stud, (Stuffing Box)	040-3033-2	2		8MM X 45MM
22	Nut	040-3103-1	8		
23	Nut	040-3102-5	16		
50A	Gearbox Casing	040-4252-2	1		
51A	Gearbox Cover	040-4254-0	1		
52A	Cap, Impeller Shaft	040-4372-1	2		
53A	Cap, Input Shaft	040-4372-6	2		
54A	Impeller Shaft	040-4276-2	1		1000RPM
54B	Impeller Shaft	040-4276-5	1		540RPM
55A	Gear	040-4258-7	1		1000RPM
55B	Gear	040-4258-6	1		540RPM
56A	Input Shaft	040-4278-8	1		
57A	Spacer	040-4175-4	1		
58	Dip Stick	040-3181-9	1	PPC 8	
59	Filler Cap	040-3174-3	1	PPC 9	
60A	Gearbox Gasket	040-3383-5	1		
61	Bearing, Bushing	040-4186-2	1		
62	Deflector	040-3183-6	1		
63	Impeller Nut	040-3313-2	1	PPC2	18MM(RPDA18B)
64A	Bearing Impeller Shaft	040-3511-4	1		
65A	Bearing Impeller Shaft	040-3512-2	1		
66A	Bearing Input Shaft	040-3502-3	1		
67A	Bearing Input Shaft	040-3504-0	1		
68A	Oil Seal	040-3326-3	2		
69A	O-Ring	040-3342-6	2		

caprari



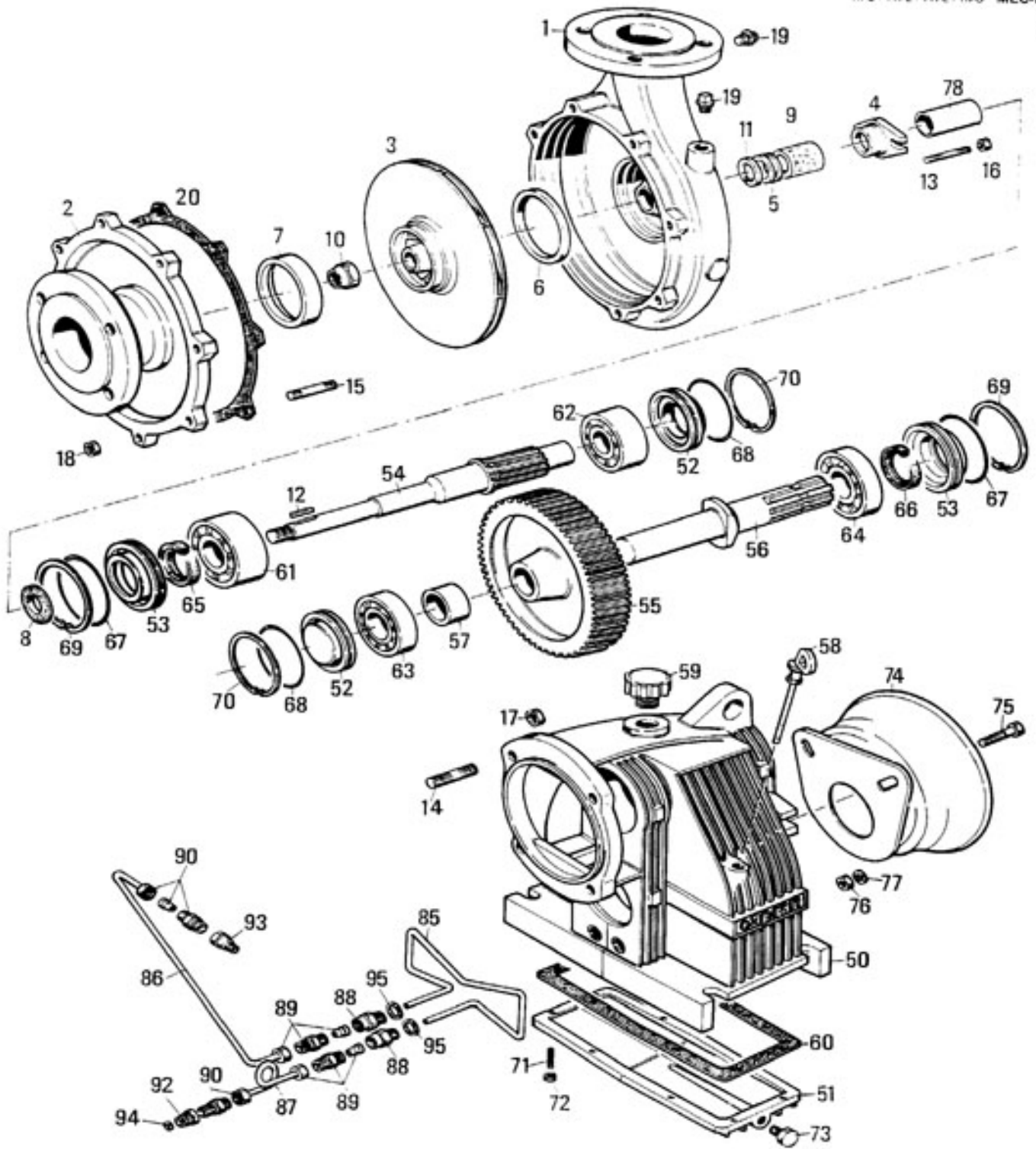
CAPRARI PUMP ASSEMBLY DMR80

No.	Description	Kifco #	Qty.	Tuckasee #	Dimensions
70A	O-Ring	040-3342-7	2		
71	Key	040-3142-7	1	PPC3	6MM X 6MM X 30MM
72	Key	040-3143-4	1		
73A	Retaining Ring	040-3157-7	2		
74B	Retaining Ring	040-3157-4	2		
75A	Stud (Gearbox Cover)	040-3031-0	8		
76A	Nut	040-3101-2	8		
77	Nut	040-3102-2	2		
78A	Screw	040-3008-2	2		
79	Washer	040-3131-6	2		
80A	Guard PTO Shaft	040-4630-1	1		
81	Plug	0403172-2	1		
85	Cooling Coil	040-5424-2	1		
86A	Cooling Pipe	040-5424-3	1		
87A	Cooling Pipe	040-5424-4	1		
88	Threaded Connector	040-4432-5	2		
89A	Compression Coupler W/Nut and Ferrule	040-3179-7	2		
89B	Ferrule, 8mm (5/16") (Not Shown)	040-0860-0	2		
89C	Compression Nut For Ferrule (Not Shown)	040-3900-0	2		
90	Compression Ell W/Nut and Ferrule	040-3179-6	1		
91	Compression Coupler W/Nut and Ferrule	040-3179-5	1		
92	Bushing	040-3179-4	1		
93	Bushing	040-3177-2	1		
94	Restrictor	040-3137-9	1		
95	Sealing Washer	040-3138-5	2		



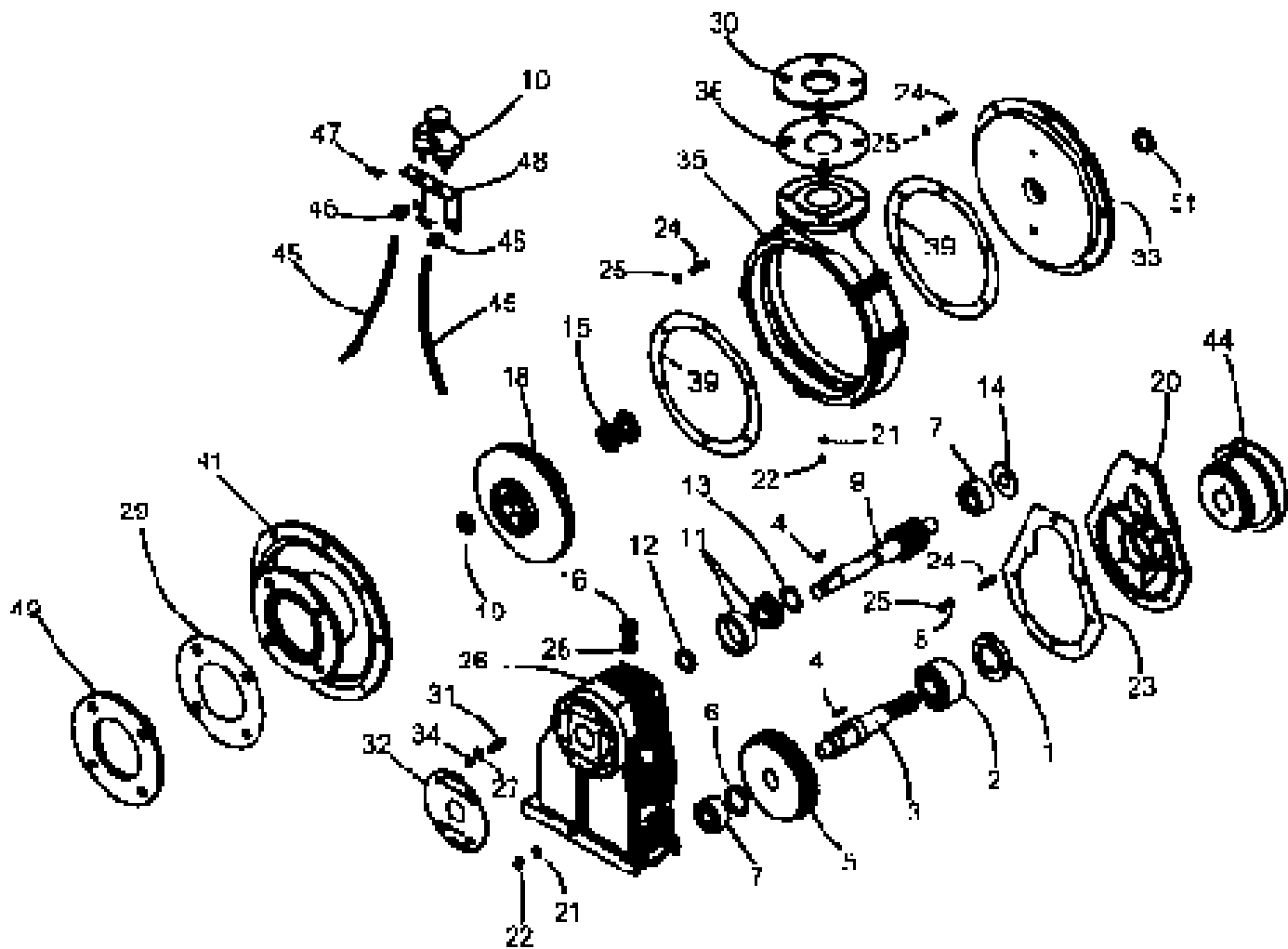
CAPRARI PUMP ASSEMBLY D3101A

No.	Description	Kifco #	Qty.	Tuckasee #	Dimensions
1	Pump Casing	040-4008-7	1		
2	Suction Cover	040-4039-8	1		
3	Impeller	040-4081-5	1		
4	Stuffing Box	040-4163-3	1		
5	Lantern Ring	040-4282-2	1		
6	Wear Ring Casing	040-4454-0	1		
7	Wear Ring Cover	040-4454-1	1		
8	Deflector	040-3183-6	1		
9	Packing	040-3334-5	1		
10	Impeller Nut	040-3313-3	1		
11	Dowel		2		
12	Impeller Key	040-3143-4	1		
13	Stud	040-3033-2	2		
14	Stud	040-3036-7	4		
15	Stud	040-3034-1	8		12-1.75MM X 37MM
16	Nut	040-3102-1	2		
17	Nut	040-3103-1	4		
18	Nut	040-3102-5	8		12-1.75MM
19	Plug	040-3171-4	2		3/8"
20	Gasket-Suct cover	040-3372-2	1		
50	Gearbox Casing	040-4251-1	1		
51	Gearbox Cover	040-4254-1	1		
52	Cap-Gearbox Shaft	040-4372-3	2		
53	Seal Housing	040-4372-4	2		
54	Impeller Shaft	040-4275-6	1		
55	Gear Wheel	040-4257-3	1		
56	Input Shaft	040-4278-5	1		
57	Spacer	040-4168-9	1		
58	Dip Stick	040-3181-9	1		
59	Filler Cap	040-3174-3	1		
60	Gasket-Gearbox Cover	040-3383-6	1		
61	Bearing-Impeller Shaft	040-3511-5	1		
62	Bearing-Impeller Shaft	040-3511-3	1	PPC 10	5307/A
63	Bearing-Input Shaft	040-3508-7	1		
64	Bearing-Input Shaft	040-3504-6	1		
65	Oil Seal-Impeller Shaft	040-3327-5	1		
66	Oil Seal-Input Shaft	040-3327-5	1		
67	O-Ring	040-3343-2	2		
68	O-Ring	040-3342-8	2		
69	Retaining Ring	040-3158-0	2		



CAPRARI PUMP ASSEMBLY D3101A

No.	Description	Kifco #	Qty.	Tuckasee #	Dimensions
70	Retaining Ring	040-3157-4	2	PPC 20	80MM
71	Stud	040-3031-5	8		
72	Nut	040-3101-7	8		
73	Plug	040-3172-2	1		1/4"
74	Guard-PTO Shaft	040-4630-2	1		
75	Bolt -Guard	040-3008-5	2		
76	Nut	040-3102-2	2		
77	Washer	040-3131-6	2		
78	Sleeve-Imp Shaft	040-4186-2	1		
85	Cooling Coil	040-5424-0	1		
86	Cooling Pipe *	040-5423-9	1		
87	Cooling Pipe *	040-5423-8	1		
88	Threaded Connector	040-4432-5	2		
89	Coupler W/Nut & Ferrule	040-3179-7	2		
90	Coupler W/Nut & Ferrule	040-3179-5	2		
92	Bush	040-3179-4	1		
93		040-3179-9			
94	Restrictor	040-3137-9	1		
95	Sealing Washer	040-3138-5	2		



CARRARI PUMP ASSEMBLY NT120S

No.	Description	Kifco #	Qty	Dimensions
1	Seal O	022-0050-0	1	45MM X 62MM X 10MM
2A	Double Row Ball Bearing	022-0069-1	1	5209K (Fafnir)
2B	Single Row Ball Bearing	022-0069-0	1	AK6209 (Used on earlier pumps)
3A	Input Shaft	022-0070-2	1	PTO
3B	Input Shaft	022-0070-1	1	PTO 2000RPM
4	Key	022-0057-0	2	8MM X 7MM X 300MM RD ED
5A	Drive Gear	022-0071-0	1	540 RPM 68t
5B	Drive Gear	022-0071-1	1	1000 RPM 61t
5C	Drive Gear	022-0071-2	1	2000RPM DIESEL 42t
6	Retaining Ring	022-0056-0	1	
7	Bearing	022-0072-0	2	5306K
8	Washer, Lock			10MM
9A	Impeller Shaft	022-0074-0	1	540RPM
9B	Impeller Shaft	022-0074-1	1	1000RPM 19t
9C	Impeller Shaft	022-0074-2	1	2000RPM DIESEL
10	41 Plastic Bottle With Cap	022-0605-0	1	
11	Bearing	022-0075-1	1	
12	Oil Seal	022-0000-0	4	40MM X 62MM X 10MM
13	Machine Bushing (When Needed)			
14	Washer	598-0024-0	1	10X2-3/4" OD X 20" THICK
15	Machine Seal	022-0075-2	1	
16	Oil Filter Seal	022-0000-1	1	
18A	Impeller	022-0082-0	4	540 & 1000RPM
18B	Impeller	022-0082-1	1	(CLOSED 2000 RPM)
19A	Impeller Nut Right Hand Thread	022-0083-0	1	(USED ON 540 & 1000RPM)
19B	Impeller Nut Left Hand Thread	022-0083-1	1	(USED ON 2000RPM)
20	Gearbox Cover	022-0070-0	1	
21	Sealing Washer	022-0083-0	1	
22	Oil Level Plug	022-0086-0	1	
23	Gearbox Gasket	022-0061-0	1	
24	Stud	022-0062-0	24	10-1.5MM X 43MM
25	Nut	022-0087-0	24	10-1.5MM

