



# SOFT HOSE TRAVELING GUN

## STANDARD FEATURES ON MODEL 2970H SOFT HOSE TRAVELER:

- α 4 1/2" x 660' Hose
- α Cable Level Wind
- α Gas Engine On Winch Drive
- α PTO Hose Rewind
- α 10 Year Hose Warranty
- α SR200 Nelson Gun
- α Two Wheel Low Profile Gun Chart
- α Galvanized Aircraft Cable 5/16 x 1320 Ft.
- α Variable Speed Hydraulic Winch
- α End Of Run Kill Switch



**Model 2970H**  
(Other Sizes Available)

## WHY SHOULD YOU CONSIDER A SOFT HOSE TRAVELER?

- ✓ 950 GPM Capacity
- ✓ 1.9" Solids Handling Capability
- ✓ Low Initial Cost
- ✓ Eliminate Compaction
- ✓ Low Labor Requirement  
(One Hour per 12 Acres Covered)
- ✓ Cover Area 400 Ft. Wide X 1320 Ft. Long Per Pass
- ✓ Low Pressure System  
(40 PSI Drop At 950 GPM)
- ✓ Easy To Transport Between Farms
- ✓ Simple Design For Fewer Repairs
- ✓ Use For Slurry And Irrigation



As illustrated above, the 2970 can deliver up to 57,000 gallons per hour. That equals a 3,000 gallon tanker every 3 minutes without complications. Other sizes available.

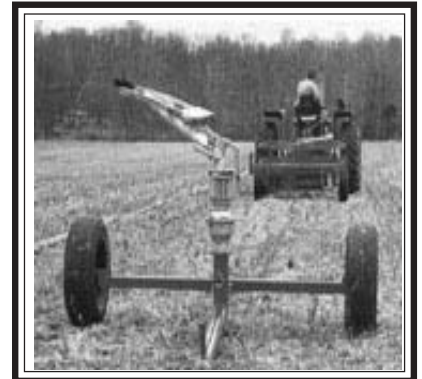
# Easy as 1 - 2 - 3



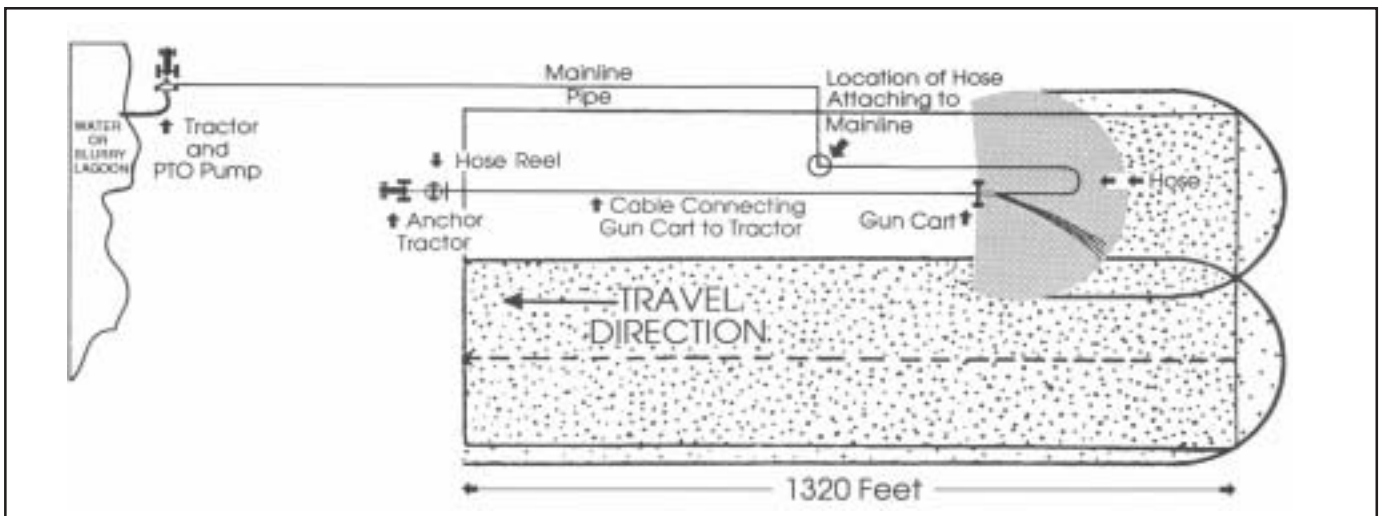
**1** Place pump at water source or lagoon and connect pipe line to the area to be covered. The most common pumps are PTO, engine and electric drive. Common pipe lines are aluminum and PVC underground.



**2** Connect traveler hose to pipe and drive to the end of the field unrolling all of the hose off the reel. Turn around at the end and drive 50 ft. past the hose end.



**3** Detach the gun cart from the hose reel, loop hose and connect it to the gun cart. Fasten cable to the gun cart and drive beside the hose unwinding the cable. **START PUMP!**



## TUCKASEE IRRIGATION

PO BOX 837 300 DAV RD  
RUSSELLVILLE, KY 42276

PHONE: 800-725-5986

FAX: 270-726-9528

[www.tuckaseeirrigation.com](http://www.tuckaseeirrigation.com)

